

LD95



Miniature Floor or Ceiling Mounted Spotlight

Data sheet - Page 1

LD95 is a miniature floor or ceiling mounted spotlight. It has been designed for applications where a recessed fitting cannot be installed, and a discreet, non obtrusive solution is required. It features a deep recessed LED and optional glare shield, removing the need for a large cowl. Using the latest in LED technology, with a typical 93 CRI in 3000K warm white, the LD95 offers an excellent diffused beam shape from a range of optics. The LD95 incorporates an integral anti-wicking barrier for added protection and is available with a choice of switch, 0-10V, DMX, Dali or mains dimmable remote drivers.

Key Features

- Miniature design with high output LED
- Excellent diffused beam shape from a range of optics
- Optional glare shield accessory
- Typical 93 CRI in 3000K warm white
- Integral anti-wicking barrier provides increased protection against moisture
- Range of finishes available
- Variable output options
- Machined from a solid billet of aluminium
- Reverse polarity protection
- Available with Switch, 0-10V, DMX, Dali or Mains dimmable drivers

Specification

Applications



Beam Angles 12°, 31°, 48°, 36° x 12°

LED type 1 x Cree XPG2

Colour temperature	2700K** / 3000K			5000K		
	350	500	700	350	500	700
Drive Current (mA)	350	500	700	350	500	700
LED power* (W)	1.2W	1.7W	2.4W	1.2W	1.7W	2.4W
CRI (typical)	93	93	93	80	80	80
Forward voltage (V) ₁₀₀	3.0V	3.2V	3.4V	3.0V	3.2V	3.4V
Delivered lumens** (L ₁₀₀)	90	123	164	109	149	200
Lumens per circuit watt	75	72	68	91	88	83

LED lifetime (to 70% lumen maintenance) 50,000hrs at a max ambient temperature of 35°C (if specifying fitting in ambient temperatures of up to 45°C run at 500mA max, LD95-500)

Materials Machined and iridited aluminium body, with a black anodised bezel

Glass 1mm thick low iron glass

Wiring Comes pre-wired with a 1m lead, can be specified with up to 10m at extra cost

IP rating IP66

*LED wattage includes losses associated with using an 85% efficient driver

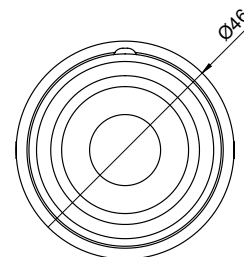
** 2700K lumen output is 12% lower than the 3000K figure listed

4000K lumen output is 14% higher than the 3000K figure listed (80 CRI)

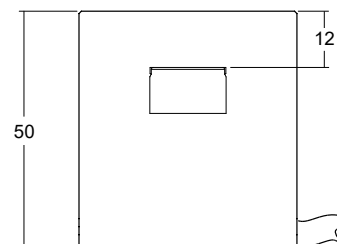


Dimensions

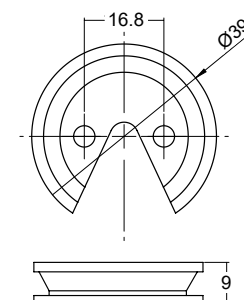
Top View



Side View



Mounting plate



LD95

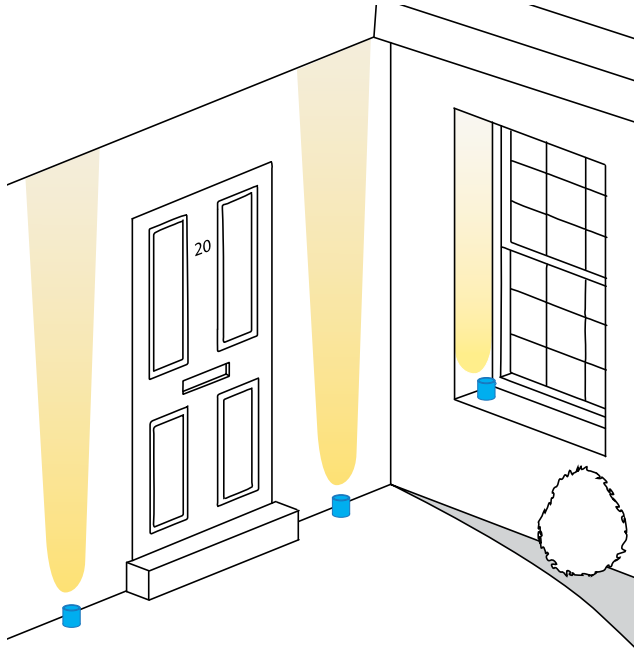


Miniature Floor or Ceiling Mounted Spotlight

Data sheet - Page 2

Applications

LD95 is incredibly versatile, allowing it to be used in a variety of applications from lighting window reveals to wall and floor washing.



Accessories

/GS - Glare shield

An optional glare shield is available for the LD95 to further reduce glare from the LED and optic. This does not reduce the light on the lit surface (wall) but will cut out some light onto the ceiling or floor.



Cone Diagrams

Cone diagrams below are based on a 3000K LED run at maximum output 700mA.

Narrow Beam 700mA using a 12° optic

Distance (m)	Luminance (lx)
0.5	4743
1.0	1186
1.5	527
2.0	296
2.5	190
3.0	132

Cone Width (m)

Medium Beam 700mA using a 31° optic

Distance (m)	Luminance (lx)
0.5	2199
1.0	550
1.5	244
2.0	137
2.5	88
3.0	61

Cone Width (m)

Wide Beam 700mA using a 48° optic

Distance (m)	Luminance (lx)
0.5	1169
1.0	292
1.5	130
2.0	73
2.5	47
3.0	32

Cone Width (m)

Oval Beam 700mA using a 36°x12° optic

Distance (m)	Luminance (lx)
0.5	2944
1.0	736
1.5	327
2.0	184
2.5	118
3.0	82

Cone Width (m)

Finish Options

A range of paint finishes are available which are suitable for exterior applications. Please refer to our finished guide for more information.

Paint Finish White



Paint Finish Black



Paint Finish Antique Bronze



Photometric files (LDT) are included in the design pack which can be downloaded from the LD95 product page on the website.

LD95

Miniature Floor or Ceiling Mounted Spotlight

Data sheet - Page 3



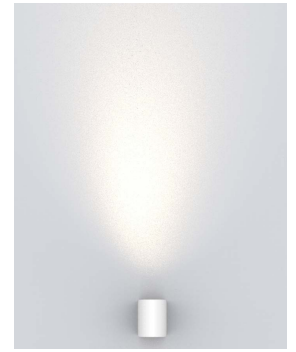
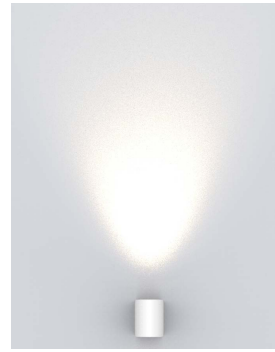
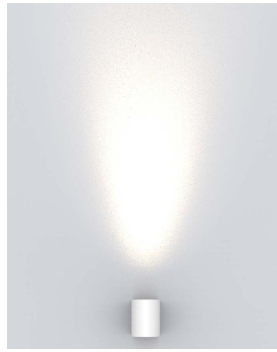
Lens Options

/NB - 12° narrow

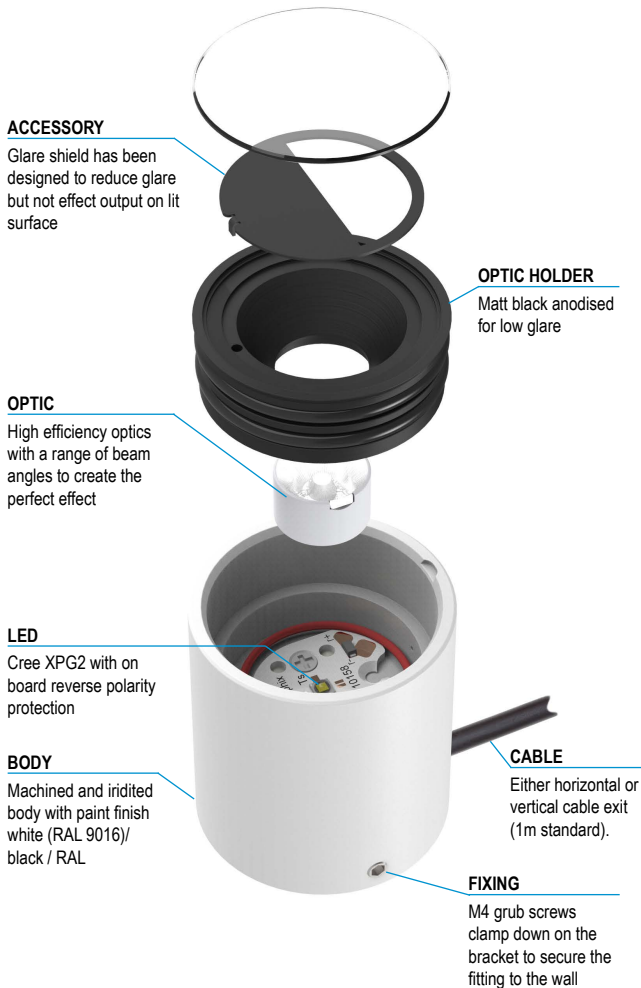
/MB - 31° medium

/WB - 48° wide

/OB - 36° x 12° oval



Product Parts



Order Codes and Options

Product code	LED colour	Lens angle	Accessory	Finish
LD95 - 350 - 500 - 700	<input type="text"/>	<input type="text"/>	<input type="text"/>	<input type="text"/>

Example: LD95-700 / LW30 / MB / GS / White

Product codes with output options

1.2W LED at 350mA	LD95-350
1.7W LED at 500mA	LD95-500
2.4W LED at 700mA	LD95-700

LED colour options

Extra Warm White (2700K)	/LW27
Warm White (3000K)	/LW30
White (4000K)	/LW40
Cool White (5000K)	/LW50

Beam / lens angle options

12° narrow spot	/NB
31° medium	/MB
48° wide	/WB
36° x 12° oval	/OB

Accessory

Glare shield (GS56T)	/GS
----------------------	-----

Finish options

Body - Paint finish white (RAL 9016) / black / RAL
For marine environments specify powder coat

Use with 350mA, 500mA and 700mA constant current LED drivers

We have a wide range of dimmable LED drivers, 0-10V, DMX, DALI and Mains dimmable. Please see the downloads section on our website:

To run 1-14 LD95-350 in series use a TXDEL350D (0-10V dimmable)

To run 1-14 LD95-500 in series use a TXDEL500D (0-10V dimmable)

To run 1-13 LD95-700 in series use a TXDEL700D (0-10V dimmable)